

# METRO Gold Line

## Bus Rapid Transit-Oriented Development (BRTOD)

City of Landfall Village Neighbors and Businesses –

You are invited to participate in Gold Line bus rapid transit (BRT) station area planning for the proposed Greenway Station located at Greenway Avenue N and Hudson Boulevard N. (more information on back).

The City of Landfall and the City of Oakdale are hosting a community meeting:

**Wednesday, July 11, 2018**

**6:00-7:30 pm**

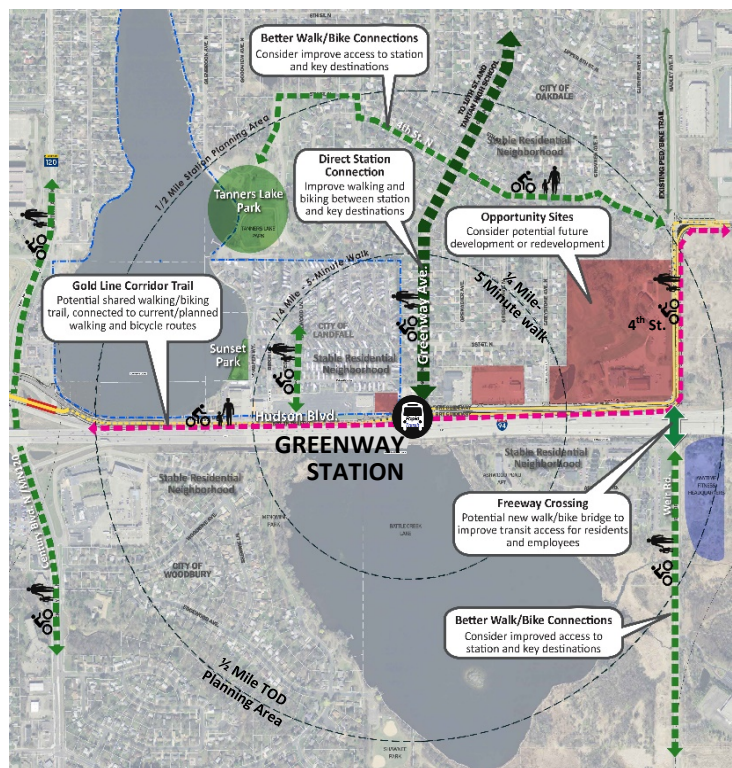
**Community Center (next to Landfall City Hall), 2 4<sup>th</sup> Avenue, Landfall MN 55128**

We are gathering community perspectives on the ½-mile area around the **Greenway Station area**, specifically:

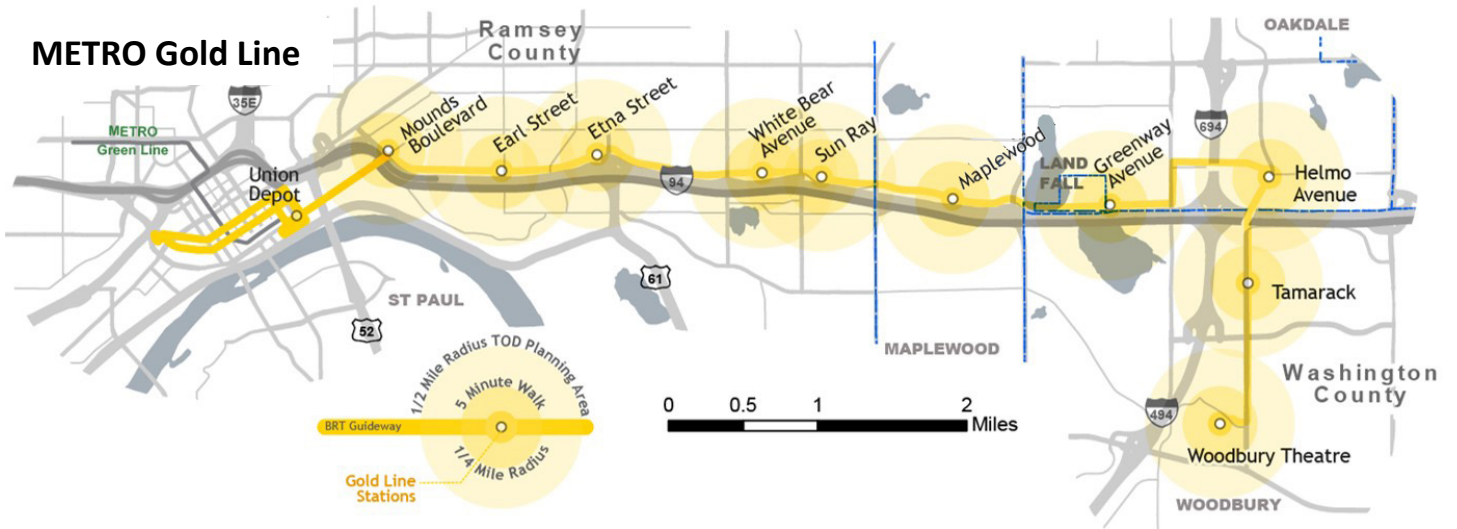
- Proposed station area walking and biking concepts for improving access to the station and neighborhood destinations
- Proposed station area land uses that include potential housing, and a limited amount of commercial development.

Please arrive by 5:45 pm, and a presentation will begin at 6:00 pm. The presentation includes a project overview, summary of the previous neighborhood meeting; review of preliminary walk/bike access improvements and potential future land use concepts.

Following the presentation, participants will meet in small groups to discuss thoughts about the proposed station access and land use concepts and fill out individual response sheets.



- **Contribute online:** The same information will be available on the project website, submit thoughts through the survey provided at, [www.thegatewaycorridor.com/station-area-planning/](http://www.thegatewaycorridor.com/station-area-planning/)
- **Gold Line BRTOD information:** [www.TheGatewayCorridor.com](http://www.TheGatewayCorridor.com), or [GatewayCorridor@co.washington.mn.us](mailto:GatewayCorridor@co.washington.mn.us)
- **Questions?** Contact City Administrator, Ed Shukle 651-739- 4123; [eshukle@cityoflandfall.com](mailto:eshukle@cityoflandfall.com). The City of Landfall Village will be the main point of contact for Landfall residents and businesses throughout the project.
- **Spanish:** Spanish-language materials and interpretation will be provided at this meeting.



## What Is BRTOD?

METRO Gold Line Bus Rapid Transit (BRT) will be Minnesota’s first BRT line in a 9-mile dedicated lane. These lanes are exclusively for transit buses, and will be built north of I-94 in St. Paul, Maplewood, and Landfall, and along Helmo Avenue in Oakdale and Bielenberg Drive in Woodbury. When the Gold Line opens in 2024, St. Paul will be served by BRT stations at Mounds Boulevard, Earl Street, Etna Street, White Bear Avenue, and the Sun Ray Shopping Center.

Through 2018, community members are invited to help plan for bus rapid transit-oriented development. BRTOD is a type of development approximately 1/2 mile around stations that includes a mix of housing, office, retail, and other amenities within a walkable and bike-friendly neighborhood. BRTOD planning will help improve each community’s access to jobs, housing, daily shopping needs, and recreation to enhance the quality of life for people of all ages and incomes.

County and city project partners will work directly with stakeholders throughout the BRTOD project to ensure feedback is understood, considered, and directly reflected in resulting plans. Using stakeholder input with technical and market analyses, the project team will create transit-oriented development plans for each station area that will be reviewed, revised, and considered for adoption by corridor counties and cities.

### Bus Rapid Transit (BRT)

- Dedicated lanes exclusively for buses
- Riders pay before boarding the bus
- Platforms provide level bus boarding
- Real-time departure signs, maps, and signage at stations
- Enhanced security at stations, on buses
- Unique buses with wide aisles and extra doors

