

# Greenway Station Constraints



Constraints Map

Today, it is hard for those who choose to walk or bicycle in the area 1/2 mile around the Greenway station, and I-94 is a major barrier to residents on the south side who wish to access the future Greenway station. Existing development along Hudson Boulevard serves customers arriving by vehicle, not on foot or bicycle. There are few other housing options or goods and services to meet daily needs within walking or bicycling distance of the station.

## YOUR COMMENTS – Constraints

Looking at the Constraints Map on the left, please use the space below to offer your comments, questions, or concerns.

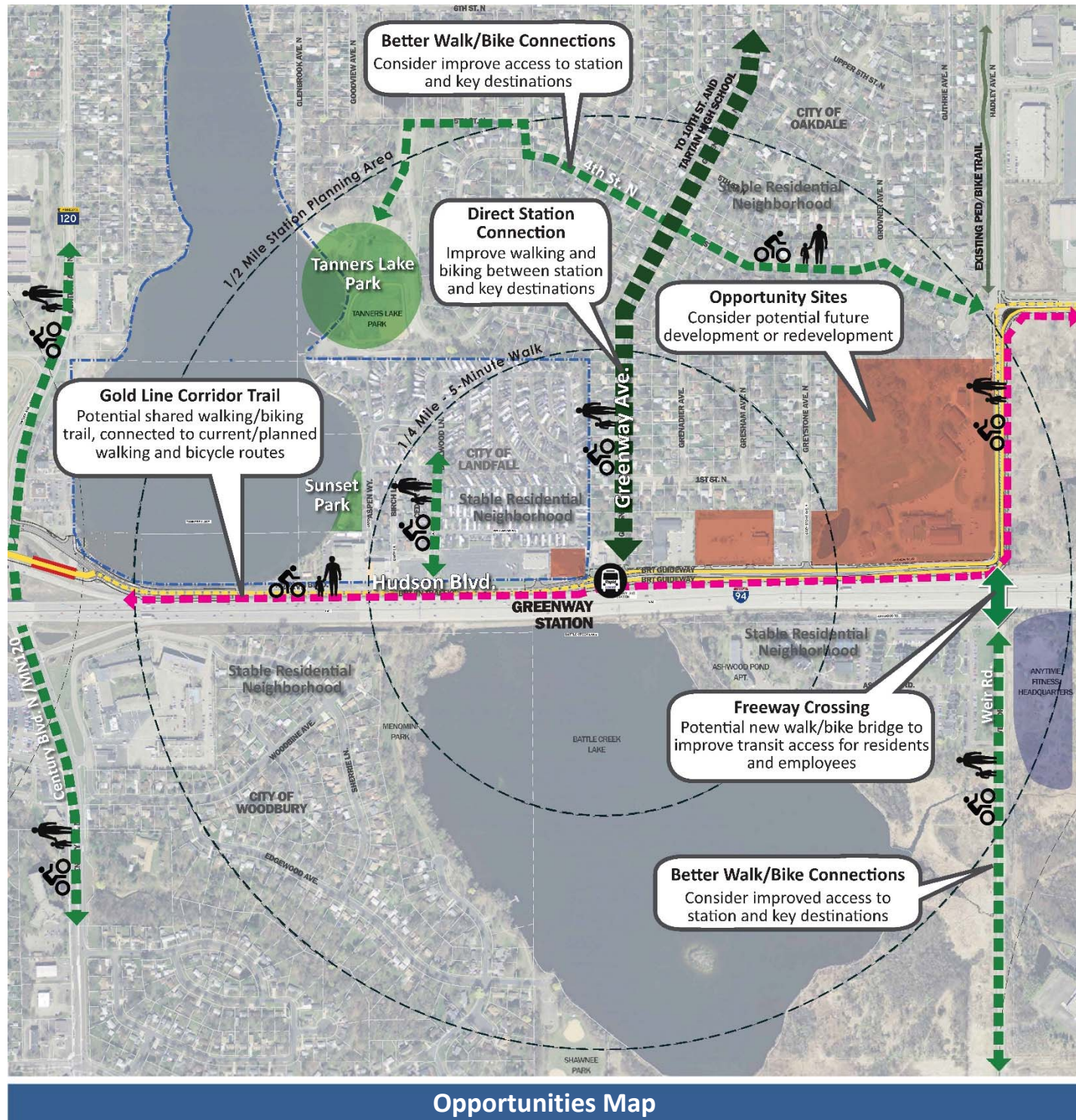
1. What other Constraints do you think are missing?
2. What prevents you or your family from getting to transit or neighborhood destinations by walking or biking?
3. Within walking or biking distance of your home, what types of uses are missing that would benefit you or your family?

ADDITIONAL COMMENTS, QUESTIONS, or CONCERNS

Name (optional): \_\_\_\_\_

Please return comments to:  
**Landfall City Administrator Ed Shukle at the Landfall Terrace Park Office, 50 Aspen Way or City Hall, One 4th Avenue; or scan and email to [eshukle@cityoflandfall.com](mailto:eshukle@cityoflandfall.com);**  
**or respond online at [www.TheGatewayCorridor.com/station-development](http://www.TheGatewayCorridor.com/station-development)**





Opportunities Map

For the future Greenway station area, there are many ways to improve walking and bicycling to transit and neighborhood destinations. Potential future development along Hudson Boulevard could provide additional housing options, and nearby goods and services to meet the daily needs of current and future residents.

Looking at the Opportunities Map on the left, please use the space below to offer your comments, questions, or concerns.

1. What other Opportunities do you think are missing?
2. What improvements would encourage or support you to walk or bike to the BRT station and places in your neighborhood?
3. At the Greenway station or within walking or biking distance of your home, what types of uses would be most useful and convenient for you and your family?

ADDITIONAL COMMENTS, QUESTIONS, or CONCERNS

Name (optional): \_\_\_\_\_

Please return comments to:

Landfall City Administrator Ed Shukle at the Landfall Terrace Park Office, 50 Aspen Way or City Hall, One 4th Avenue; or scan and email to [eshukle@cityoflandfall.com](mailto:eshukle@cityoflandfall.com); or respond online at [www.TheGatewayCorridor.com/station-development](http://www.TheGatewayCorridor.com/station-development)