

Constraints Map

Today, it is difficult for those who choose to walk or bicycle in the area 1/2 mile around the future Etna station, and both I-94 and the interchange with Highway 61 are major barriers. The planned station location lacks visibility from the neighborhood and freeway, and freeway noise and air quality will impact transit riders at the station. Much of the existing development along Etna Street and Wilson Avenue serves customers arriving in cars, and there is a limited amount of daily needs goods and services close to the planned station.

► Help us understand who's participating by listing your Zip Code: _____

Looking at the Constraints Map on the left, please use the space below to offer your feedback.

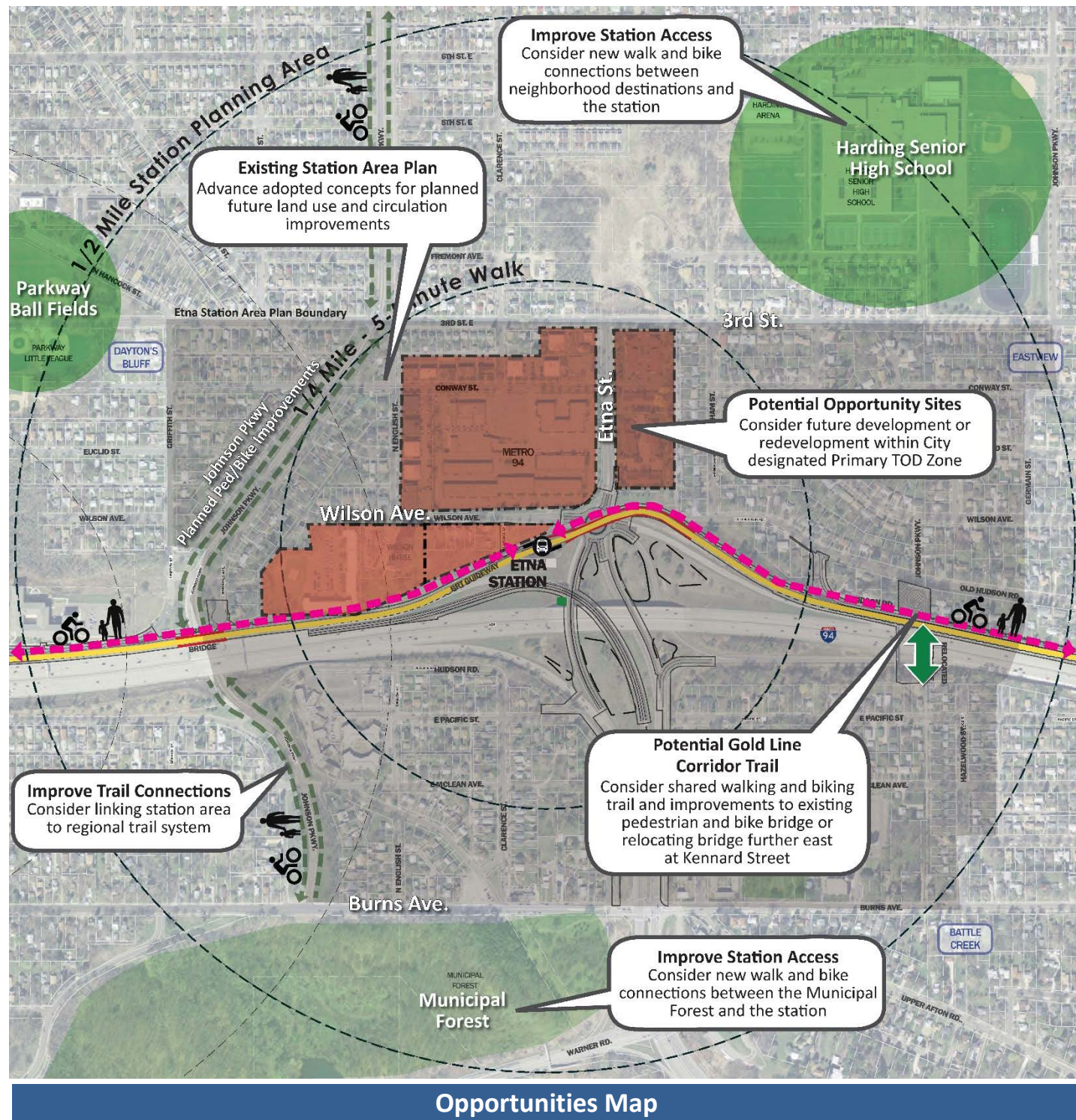
1. What other Constraints do you think are missing?
2. What prevents you or your family from getting to transit or neighborhood destinations by walking or biking?
3. Within walking or biking distance of your home, what types of uses are missing that would benefit you or your family?

Additional feedback:

Name (optional): _____

Please return comments to:

City of Saint Paul staff Bill Dermody 25 W. 4th St., 14th Floor; Saint Paul, MN 55102 Phone: 651-266-6617;
or scan and email to bill.dermody@ci.stpaul.mn.us;
or respond online at www.TheGatewayCorridor.com/station-development/



Opportunities Map

For the future Etna station area, there are many ways to improve walking and bicycling to transit and neighborhood destinations. Potential future development along Etna Street and Wilson Avenue could provide a more pedestrian-friendly environment with additional goods and services to meet the daily needs of current and future residents.

Looking at the Opportunities Map on the left, please use the space below to offer your feedback.

1. What other Opportunities do you think are missing?
2. What improvements would encourage or support you to walk or bike to the BRT station and places in your neighborhood?
3. At the Greenway station or within walking or biking distance of your home, what types of uses would be most useful and convenient for you and your family?

ADDITIONAL COMMENTS, QUESTIONS, or CONCERNS

Name (optional): _____

Please return comments to:

City of Saint Paul staff Bill Dermody 25 W. 4th St., 14th Floor; Saint Paul, MN 55102 Phone: 651-266-6617;
or scan and email to bill.dermody@ci.stpaul.mn.us;
or respond online at www.TheGatewayCorridor.com/station-development/